

Test Preparation

A. Open your test kit:



B. You should have:

Note: For IT and ST, the hole is on the kit box.



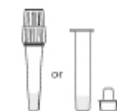
Test cassette



Tube Holder (for 25T only)



Disposable Swab



Extraction Buffer Tube



Package Insert



Waste Bag

C. Wash or sanitize your hands.



D. Read the instructions.



E. Check the expiration date.



F. Open the pouch.



G. Check the cassette



Specimen Collection

COLLECTION BY AN ADULT CAREGIVER



SELF COLLECTION



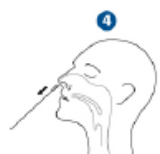
1. Insert the entire absorbent tip of the swab into one nostril. Using gentle rotation, push the swab less than 2.5 cm from the edge of the nostril.



2. Rotate the swab 5 times brushing against the inside of the nostril.



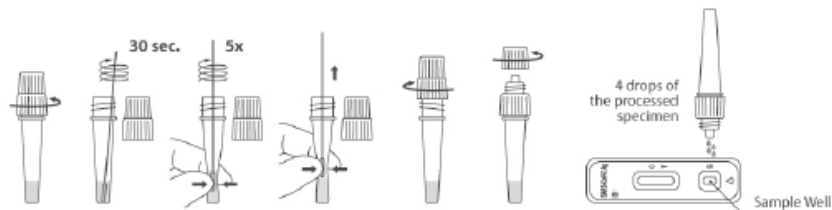
3. Remove the swab and insert it into the other nostril.



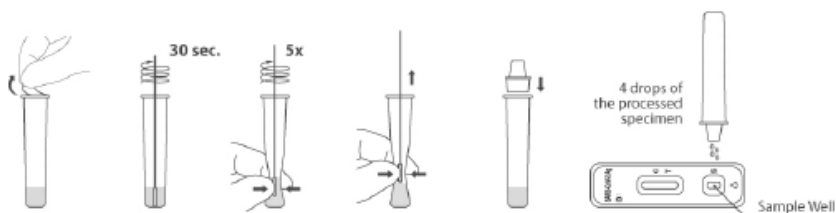
4. Remove swab from the nostril.

Test Procedure and Interpretation

Type 1



Type 2



15-30 min.



Negative



Positive



Invalid

*Two type of tubes are available, which depends on the package you ordered.

Ordering Information

Product Name	Catalog No.	Format	Specimen	Package
Flowflex SARS-CoV-2 Antigen Rapid Test (Self-Testing)	L031-11855 ✓	Cassette	Anterior nasal swabs	1 Test/Kit
	L031-118A5 ✓	Cassette	Anterior nasal swabs	5 Tests/Kit
	L031-118Q5 ✓	Cassette	Anterior nasal swabs	25 Tests/Kit
	L031-118M5 ✓	Cassette	Anterior nasal swabs	1 Test/Kit
	L031-118P5 ✓	Cassette	Anterior nasal swabs	5 Tests/Kit
	L031-118R5 ✓	Cassette	Anterior nasal swabs	25 Tests/Kit

✓ CE marked